

LOGISTIC LOCK

SAFETY LOCKING SYSTEM FOR TRUCK

SABOT



This shoe ensures the immobilisation of vehicles to allow safe loading or unloading operations. Two rollers allow the easy installation and/or removal of the wheel.

A STOP sign is integrated into the truck shoe to warn the driver of its presence.

FEATURES

Material	: Aluminium (structure) Stainless (Lock NX)
Finish	: Polyester red paint (RAL 3000)
Width of the tyre	: From 205 to 455mm (All types of tires from 17" to 22,5" and double wheels)

All pre-assembled for mounting on site.

OPERATION

When the wedge is locked on the wheel and after pushing the bar the key is released. It can then be transferred to another lock such as a barrier or a safety curtain, a dock leveller, a valve, a pump... thus ensuring that the driver is unable to leave the dock until the operation is completed.

To remove the truck shoe, trap the key and pull the bar.

Two rollers allow the easy placement and removal of the wedge.

A STOP sign is included with the wedge to inform the driver that it is in place.



Key B trapped

PUT THE TRUCK SHOE IN PLACE

- Position the wedge in front of the wheel (truck shoe is easily removed thanks to the 2 rollers and the handle.
- Slide the wedge against the wheel.



Key B trapped

TRAPPED THE WHEEL ON THE LOCKING BAR

Push the bar completely on the rim of the wheel.



Key B free

BAR TRAPPED BY BOLT LOCK

- Remove and take the key from the lock body;
- Now the bar cannot be unlocked. The truck shoe is also trapped
- The truck is immobile.

DIMENSIONS

For complete dimensions, do not hesitate to refer to us by phone +33 1 48 18 15 15 or email sales@servtrayvou.com, with drawing reference n° 1688

Pictures not contractually binding. Content and technical data subject to change without notice. To be confirm when ordering. QD33 - June 2016 edition - © Serv Trayvou Interverrouillage



LOGISTIC LOCK

SAFETY LOCKING SYSTEM FOR TRUCK BARRIER



Used with a safety truck shoe (SABOT), the barrier holds the key trapped as long as the barrier is in the upper position.

When barrier is locked in lower position, the key is released.

FEATURES

- Material

: Copper-aluminium (lock)  
Steel (barrier support structure)  
Aluminium (barrier)
- Finish

: Polyester red paint (RAL 3000)
- Length

: Between 1 and 5m (to be specified during the ordering)  
Obligatory support for length of barrier > 3m
- Options

: Contact  
Lock with two key entries  
Protection cover

OPERATION



DIMENSIONS

Technical drawing of the barrier system showing side and top views with dimensions and labels.

Labels: Switch (optional), Bolt lock, Unlocking pedal, Aluminium profile 80x60x2, Smooth support.

Dimensions: 102, 1078, 250, 20, 4 Ø12, L1, L2.

Please refer to us for a complete dimensions sheet of:

- BARRIER drawing n° 1460
- BARRIER dual key entry drawing n° 1450

LOGISTIC LOCK

**SAFETY LOCKING SYSTEM FOR TRAIN  
SABOT WAGON**



This system is used to fix the cargo wagon during loading and unloading.

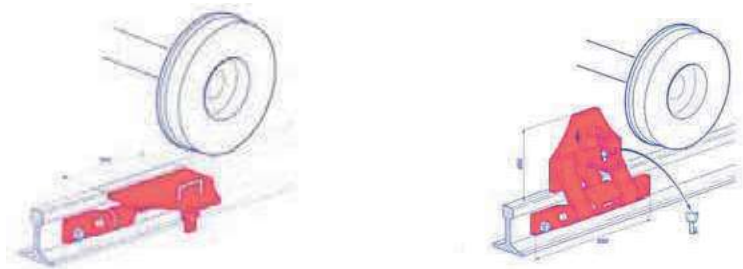
**FEATURES**

**Lock** : Standard solution with NS range (Example: Bolt lock NXO1P)  
(refer to the NS datasheet for details)



**OPERATION**

After locking the wheel, the key is released. To remove the wagon shoe, trap the key and pull the handle.



**DIMENSIONS**

For complete dimensions, do not hesitate to refer to us by phone **+33 1 48 18 15 15** or email **[sales@servtrayvou.com](mailto:sales@servtrayvou.com)**.

LOGISTIC LOCK

**ELECTRICAL KEY TRANSMITTER**

**TR**

**OPERATION**

When two units installed in a remote position are associated, an electrical key transmitter can be used to eliminate the need to carry keys thus ensuring prompt and safe operation.

Electric connection between each transmitter is required.

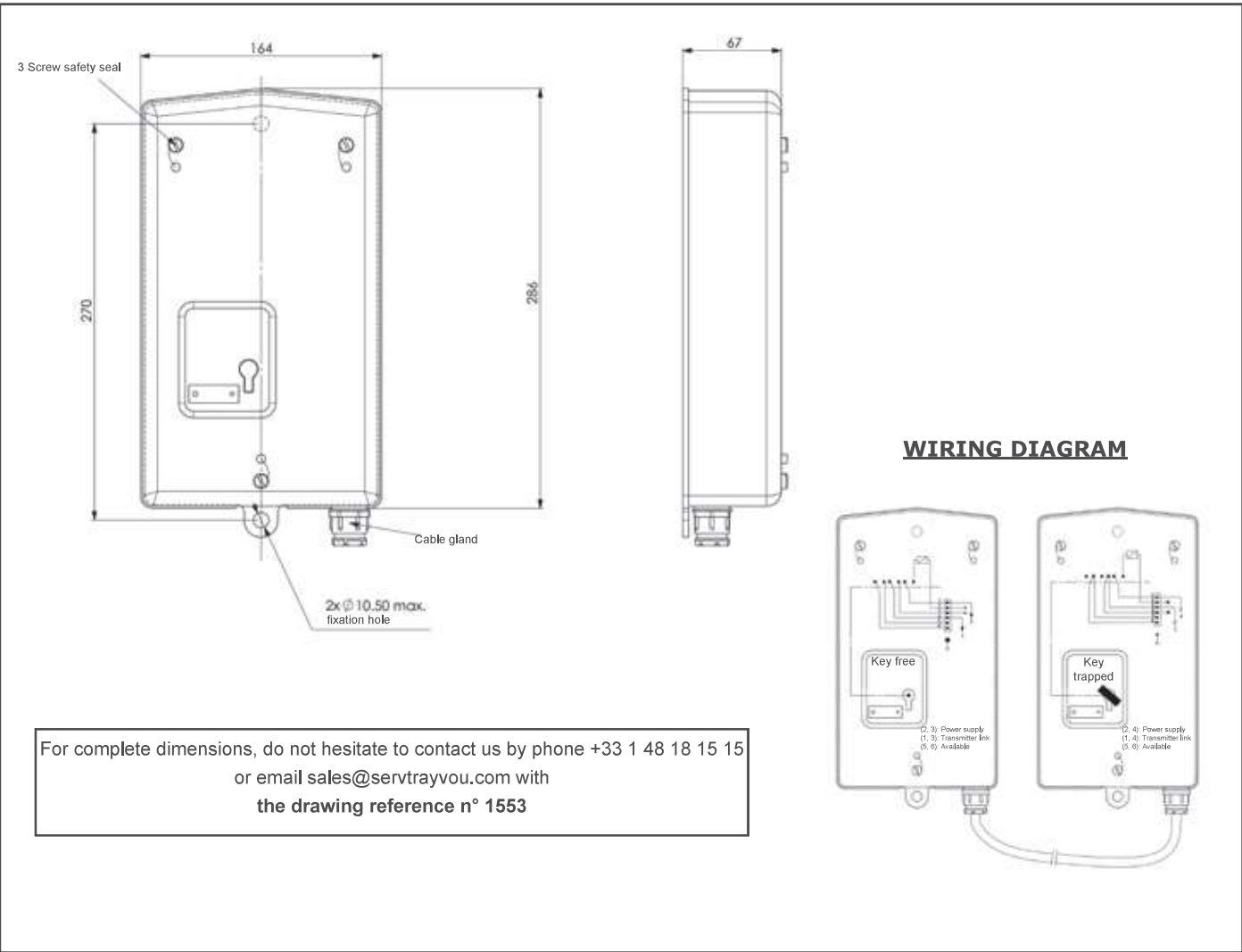
It contain:

- A projecting bolt lock to receive the key or keys to be transmitted (maximum 4)
- An electrical magnet locking device and set of contacts actuated by the bolt lock, inhibiting key releases if all conditions are not met.

- **Option** : 2 or 3 key entries
- Electrical specifications = 24 VDC



**DIMENSIONS**



LOGISTIC LOCKS

**LOCKABLE HOSE COUPLING**

**RGV - RGVem**

This global solution constrains the operator to unlocking the device before connecting a flexible device.

Helps to avoid errors (wrong product, wrong silo) during discharge operations.  
A contact can allow an electrical indication and/or the starting of the machine.

The lockable hose coupling exists in 2 versions:

- Mechanical (RGV)
- Electro-mechanical (RGVem)



**FEATURES**

Material	: Stainless 304
Connection	: Symetric half coupling standard GUILLEMIN
Dimensions	: DN80 - DN100
Temperature	: -25° to +70°C (only for RGV+ contact and RGVem)
Lock Finish	: Polyester red paint (RAL 3000)
Fixation	: Cylindrical BSP, NPT thread or Welding ends
Options (contact us)	: Temperature up to +70°C

**OPERATION**

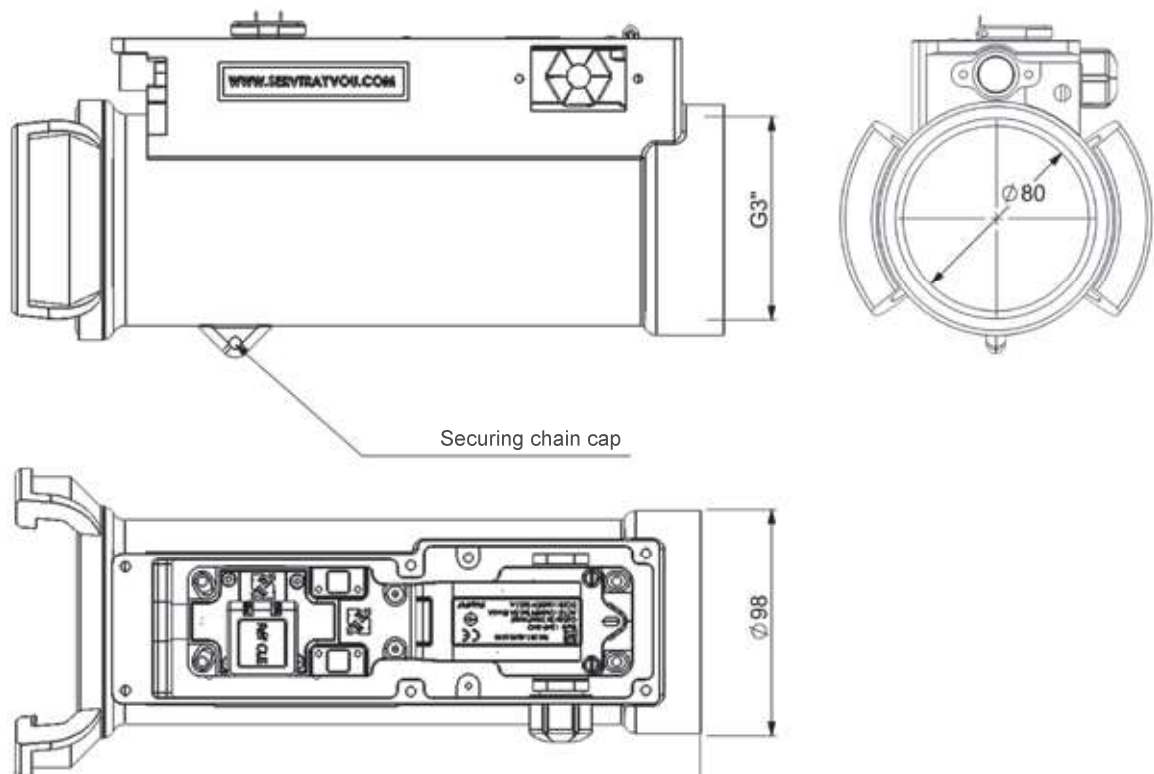
**RGV - Mechanical version**  
Key free – connection impossible / key trapped - connection authorised.  
The key remains trapped until disconnection.  
The option with contact NC2 transmits a signal (IP 66 for contact only).

**RGVem - Electromechanical version**  
- Remote unlocking to allow the connection. Green signal visible in the front.  
- Feedback information  
- Electric information authorises the connection.  
- Inductive proximity switches

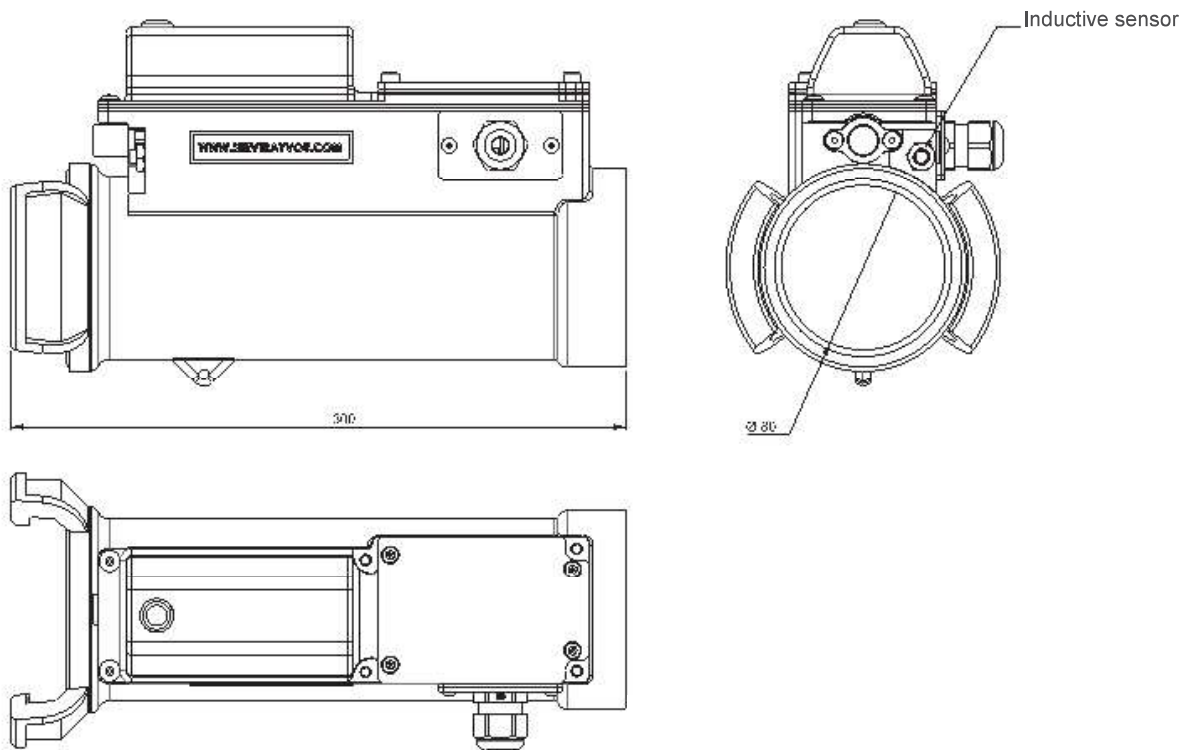


DIMENSIONS

RGV DN80 with switch NC2



RGVem DN80



Please refer to us for a complete dimensions sheet of :

- RGV electromecal DN80 drawing n° 1612
- RGV meca DN80 drawing n° 1613
- RGV meca DN100 drawing n° 1614
- RGV electromecal DN100 drawing n° 1708